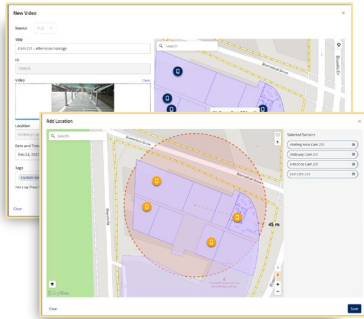


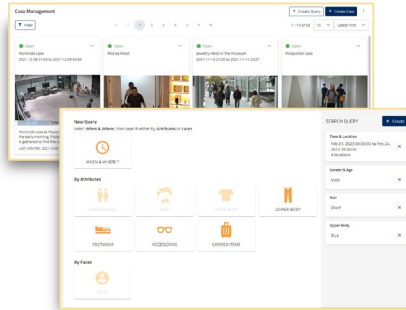
NEC Enhanced Video Analytics (EVA) V4.1

Human Attribute Analysis

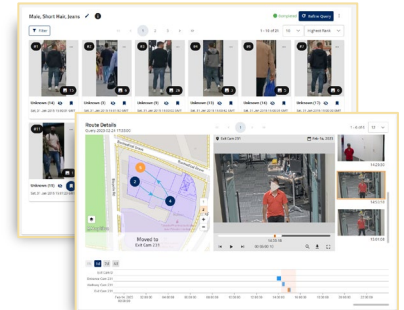
User-Centric application for post-investigation to quickly search and locate Persons-of-Interest from massive pre-recorded surveillance videos.



UPLOAD AND SELECT VIDEO SOURCES



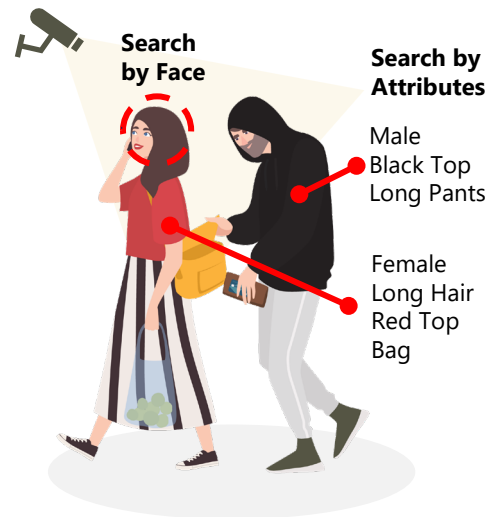
SEARCH BY ATTRIBUTES OR FACE



VIEW RESULT AND REFINE SEARCH

Key Features

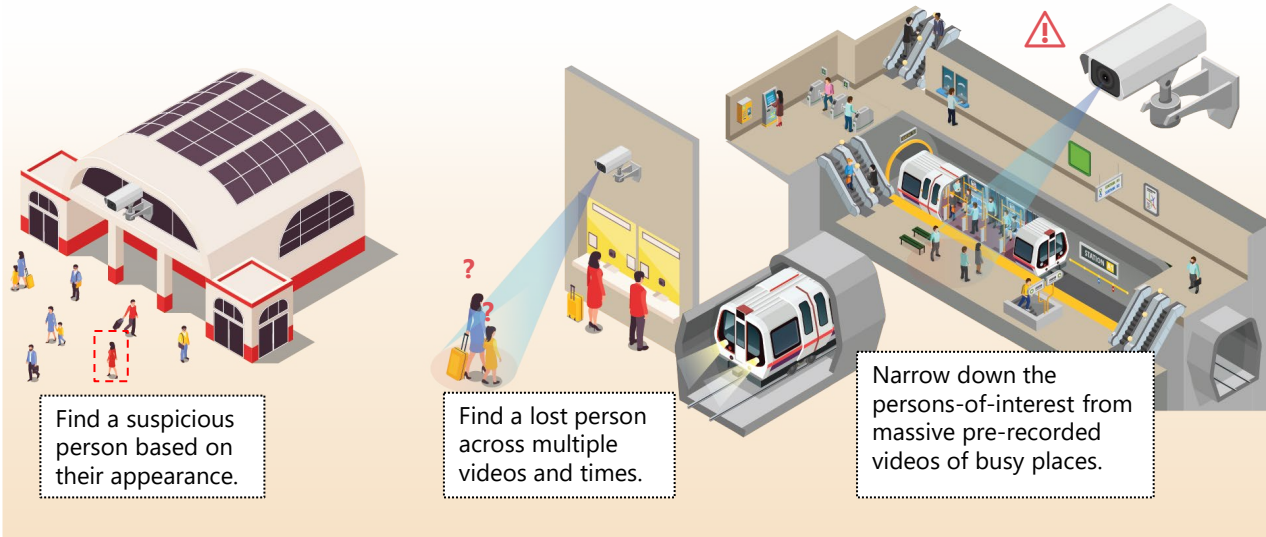
- Intuitive search from various attributes across videos: gender & age, hairstyle, upper & lower body attire, colour, footwear and belongings.
- Search from the registered & the non-registered (system auto-enrolled) faces interactively.
- Quickly view and playback the search results with auto-grouping and spatial-temporal visualisation.
- Refine and narrow the search with advanced filters and tagging options. Hide, merge and delete records to remove unwanted data further.



Technology

- Powered by **NEC Enhanced Video Analytics (EVA) 4.1** platform that combines various video analytics technologies, i.e. Human **attributes detection** engine and the award-winning NeoFace **facial recognition** engine, to provide customers with flexible & efficient video analytics solutions.
- **Cloud** or **On-premise** deployment with **Kubernetes** as its management platform to provide resource scalability and availability.

Use Cases



Tech Specs & Operational Environment

Server

Item	Specification
OS	Ubuntu Linux 20.04 / Red Hat Enterprise Linux 7.9
CPU	Recommendation: Xeon Cascade Lake 8 Cores/16 Thread Minimum: 4 Cores /8 Thread
Memory	Recommendation: 64 GB Minimum: 32 GB
Storage	Recommendation: 1TB Minimum: 512 GB
GPU	Recommendation: Tesla T4 or Nvidia A2 (for data centre deployment) Validated on: Quadro P5000, GeForce GTX 980, RTX 3060, RTX3070, RTX3080Ti and Tesla M60

Client

Item	Specification
Web browser	Google Chrome
OS	Tested on Windows 10.
Screen resolution	Mandatory: 1024x768 or higher (Recommendation: 1920x1080 or higher)
CPU	Intel Core i3-8100 CPU (3.60GHz) 4core or higher
Memory	8GB or higher
HDD	256GB or higher
Video Source	Mp4 files (codec: H.264)

Application

Item	Specification
Languages	English, Japanese
Themes	Light and Dark Theme
Processing Time	Default: 1/3 of video duration with 3 parallel processing chunks. Scalable with Kubernetes (Boost processing time by 9x).

Contact us:
+65 6273 8333 or sg_marketing@nec.com.sg

Visit us:
APAC : sg.nec.com
Japan : jpn.nec.com/video-analytics