



NEC SMART POSITIVE IDENTIFICATION (SPID)

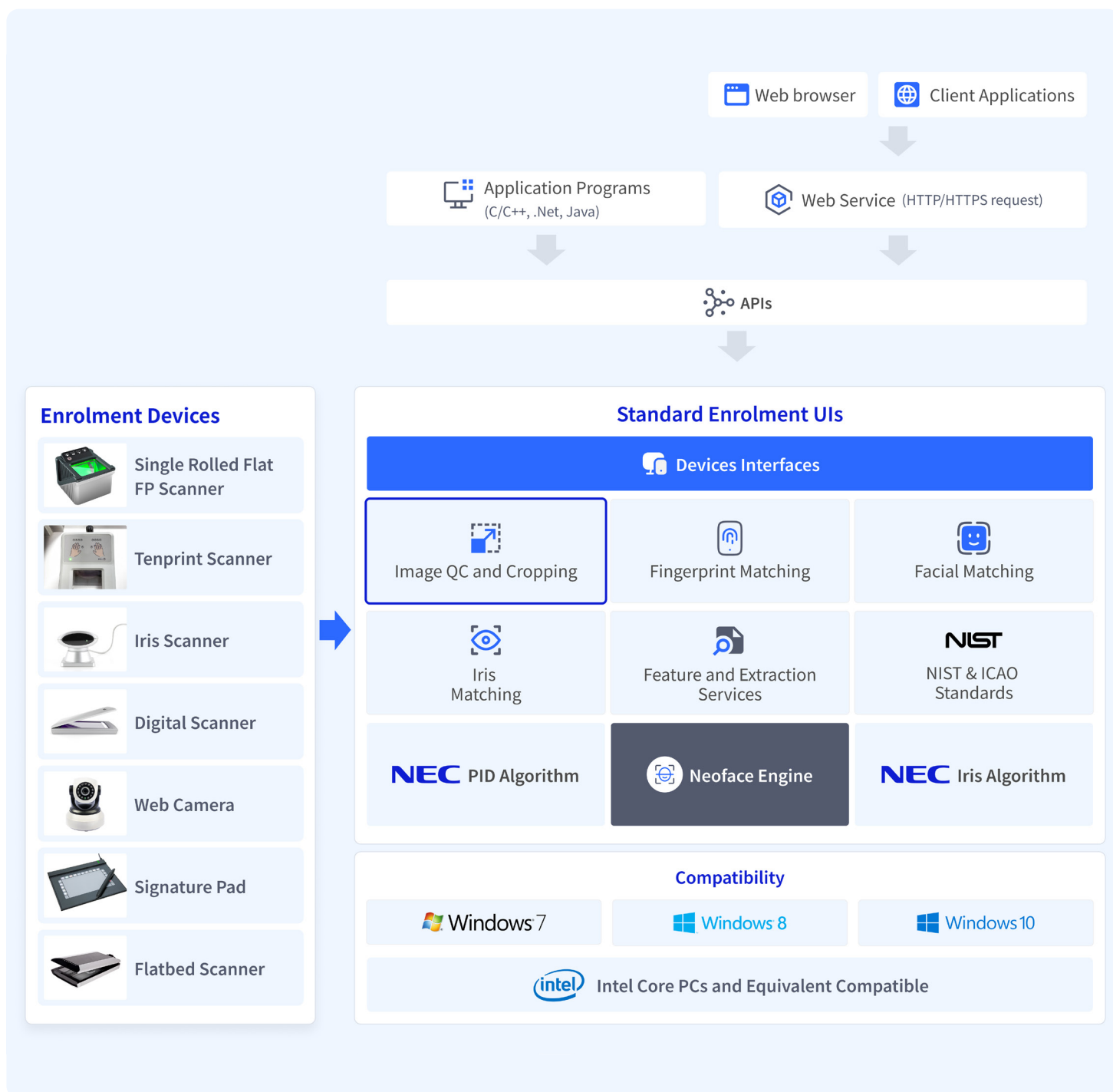
Secure, Reliable, Seamless Biometric Capture for Any Device

NEC Smart Positive Identification (SPID)

SPID is a plug-and-play biometric identity solution that supports seamless integration with various biometric capture devices, requiring only minimal coding adjustments.

Designed for cross-device compatibility and ISO compliance, SPID enhances identity verification with high-quality biometric data, ensuring accuracy and security across multiple applications.

SPID Software Architecture



Key Features

1. Plug-and-Play Device Compatibility



SPID works with a wide range of biometric devices without requiring major application changes.



Fingerprint

Crossmatch, Fotronics, Xperix, and NEC



Iris

CMI Tech, Tascent, NEC



Signature Pad



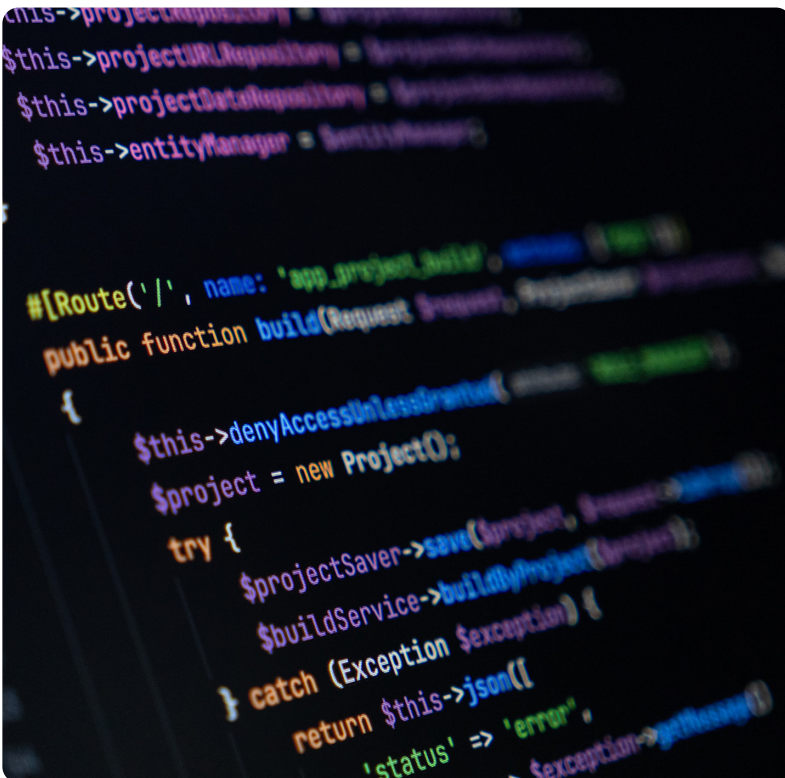
Face

Canon EOS, RealSense, NEC



Flatbed Scanner

2. ISO-Standard Quality and Liveness Verification



Ensures biometric data meets international security and quality standards



Supports ISO29794 for quality compliance across fingerprint, face, and iris recognition.

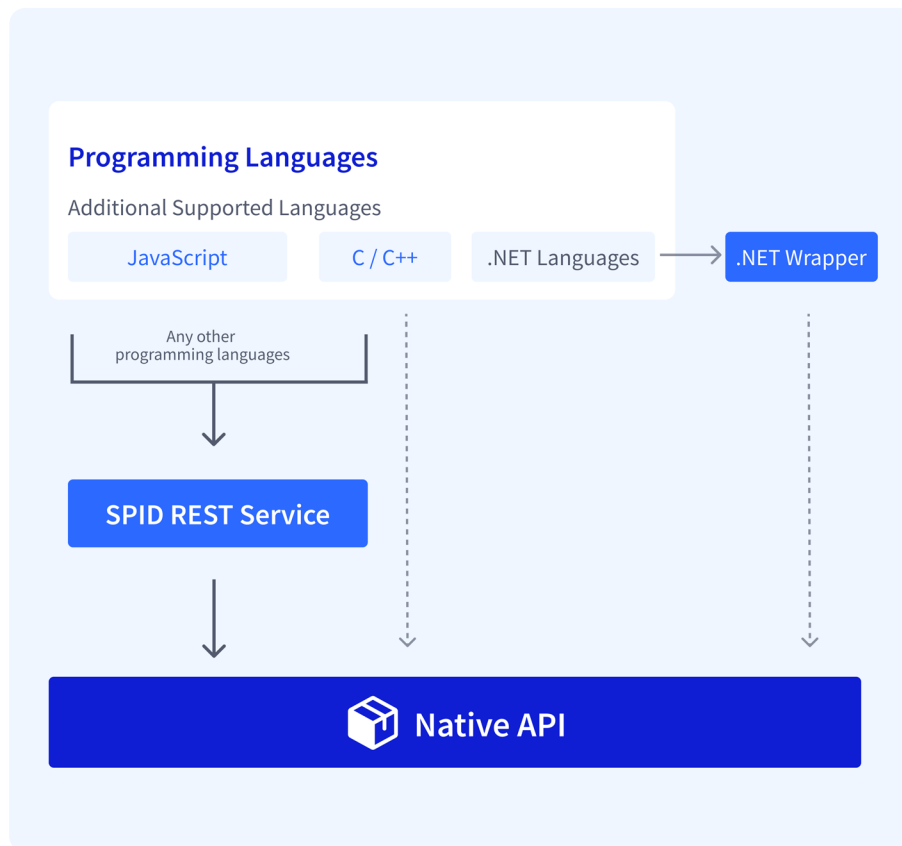


Liveness detection prevents spoofing attacks, ensuring secure identity verification.



Seamless integration with various systems using ISO19794 and ISO39794-compliant data formats.

3. Multi-Language Support for Easy Integration



SPID is designed to support multiple coding languages, making it highly adaptable for developers.

C / C++

Native supporting

.NET

Call native API through .NET wrapper

JavaScript

Call native API through SPID Rest Service

Any other programming languages

Call native API through SPID Rest Service

4. Small-Scale Biometric Matching & Edge Processing SPID Search Lite

Optimized for efficient biometric verification with minimal infrastructure.



Supports up to 10K biometric records for local matching



Database distribution to edge devices ensures continued operation in case of network issues.

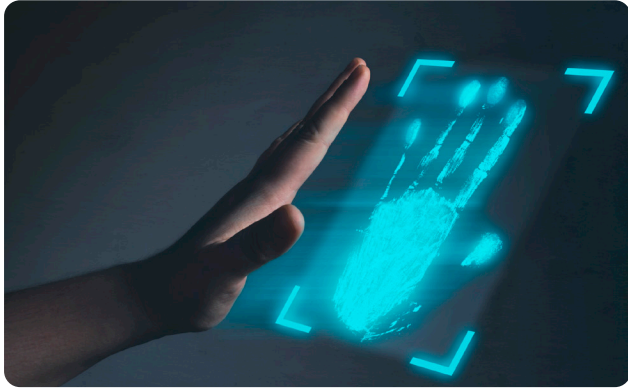


Duplication checks at the capture device before sending data to the backend, reducing system load



5. Multi-Modal Biometric Capture

SPID provides high-quality biometric enrollment for various use cases.



Supports fingerprint, palm, face, and iris capture.



Works with both single-image and slap fingerprint scanning



Real-time segmentation and quality assessment for accurate identity verification.

6. Secure Identity Verification & Matching

SPID ensures fast and secure biometric authentication.



Provides **1:1 and 1:N biometric matching** across multiple modalities.



Enables **blacklist screening, access control, and fraud prevention.**



Works with both **standalone and server-based authentication** environments.

7. Compliance with International Security Standards

SPID adheres to global standards, ensuring seamless system interoperability



Supports **ICAO, NIST, FBI, and ISO** biometric formats



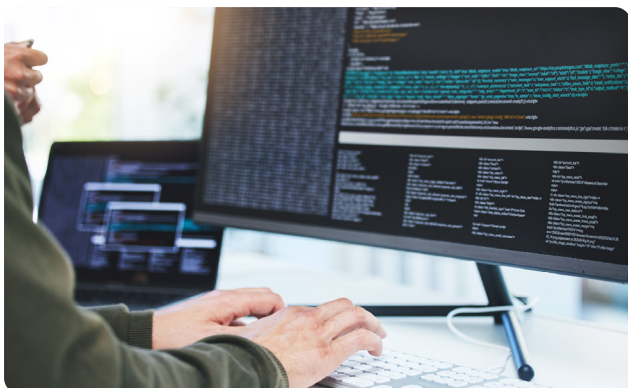
Enables **high-quality image processing** for secure identity verification.



Ensures **interoperability with multiple identity management platforms.**

8. Lightweight Scalable Deployment

SPID is designed for easy deployment across various environments.



Supports **local workstations, edge devices, and cloud-based systems.**



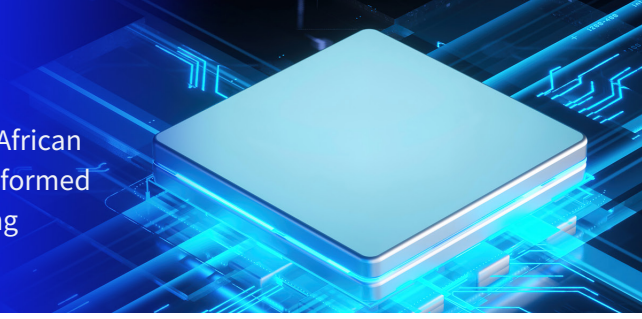
Operates without specialized OS or hardware requirements.



Provides **low-latency, high-performance processing** for biometric verification.

Proven Use Cases

SPID is globally deployed in over 20 countries, including European and African nations, supporting various biometric security applications. It has transformed the way partners and customers develop biometric applications, offering seamless integration and enhanced efficiency.



1. Border Control Solutions



Customer: Government agencies across ASEAN countries and some European countries (customer name confidential)

Challenge: Customer faced frequent device obsolescence which required application changes with each hardware upgrade.

Solution: SPID SDK's plug-and-play feature allowed easy device replacement without app modifications.

Result: New devices can be deployed without changing existing applications.

2. Law Enforcement Solutions



Customer: Police forces in ASEAN countries

Challenge: Needed to digitize legacy ink fingerprint cards, upgrade investigation tools, and adopt advanced biometrics compliant with NIST benchmarks and FBI EFT/WSQ standards.

Solution: SPID SDK offers a multi-modal biometric engine—supporting fingerprint, face, iris, palm, and voice—along with versatile tools and certified, standard-compliant libraries.

Result: Significantly reduced processing time for ink cards, while enabling smooth upgrades to NEC's latest biometric technologies.

3. Access Control Solutions



Customer: Government agencies in Singapore

Challenge: Required faster response time for biometric searches

Solution: SPID SDK's "Searching Lite" feature eliminates latency and enhances speed.

Result: Improved system performance, reduced costs and no need to modify existing applications.

Social Value

SPID strengthens digital identity management, ensuring trust, security, and accessibility in modern digital ecosystems.



Fraud Prevention & Enhanced Security

Protects against identity theft and unauthorized access.



Seamless User Experience

Provides fast and reliable biometric authentication with minimal system requirements.



Scalable & Future-Proof

Built for flexible deployment, accommodating both national-scale projects and enterprise-level security.



Arrange a demo with us today. Contact us at sg_marketing@nec.com.sg

SINGAPORE

NEC Asia Pacific Pte Ltd
(Regional Headquarters)

sg.nec.com



SCAN ME

Scan the QR code to head to our APAC site for more information on our solutions and products. Follow us on these platform for updates.



\ Orchestrating a brighter world