

Empowering Lives:
Early Detection, Timely Intervention.

FonesVisuas



In Asia's aging landscape, NEC and FonesLife pioneer blood analysis to detect early signs of age-related ailments, ensuring prompt care.



Innovating to address Asia's challenges with an aging society



Asia's demographic landscape has continually grappled with challenges posed by an aging society. Particularly in countries like Japan and Singapore, the need for innovative healthcare technology is ever more important as societies recognize the critical need for early detection and intervention in age-related conditions such as dementia, chronic kidney disease, stroke, and more. At NEC and FonesLife, an NEC company, we pioneer the analysis of blood proteins to empower healthcare providers with tools they need to identify such conditions in their nascent stages, enabling timely and life-changing interventions.

Our Solution

FonesVisuas, FonesLife's digital healthcare service, holds the key to a healthier society. Our state-of-the-art technology leverages non-invasive blood protein analysis to enable precise early detection of age-related conditions such as dementia, chronic kidney disease, stroke, and more. FonesVisuas also offers regular analyses to monitor and track changes in blood protein profiles over time. Through FonesVisuas, healthcare providers can get valuable insights, facilitating timely interventions and ultimately improving patient outcomes.

Predictive Risk	Results
Dementia Risk - 20 years	LOW ——— HIGH 16 % Relative Risk: 1.22 x <small>Coefficient compared to the average in test development</small>
Dementia Risk - 5 years	LOW ——— HIGH You are not eligible for this test as you are under 65 years of age
Cardiovascular Risk - 4 years [Type I]	LOW ——— HIGH 7 % Relative Risk: 4~5 x <small>Coefficient compared to the Lower Risk Group with the probability of onset within four years ≤ 2.2%</small>
Lung Cancer Risk - 5 years	LOW ——— HIGH 0.9 % Relative Risk: 1.00 x <small>Coefficient compared to the average in test development</small>
Chronic Kidney Disease Risk - 4 years	LOW ——— HIGH — Relative Risk: 0.25 x <small>Coefficient compared to the average in test development</small>

Body Scan	Results
Glucose Tolerance	NORMAL ——— IMPAIRED —
Liver Fat	NO EXCESS FAT ——— SOME EXCESS FAT —
Alcohol Impact	LOWER IMPACT ——— HIGHER IMPACT —
Tobacco Exposure	NO TOBACCO EXPOSURE ——— TOBACCO EXPOSURE —
Cardiorespiratory Fitness (VO2 Max)	GOOD ——— LOW 36.9 mL/kg/min
Visceral Fat	LOW ——— HIGH 1,846 g
Resting Energy Rate	MORE ——— LESS 1,019 kcal/day

(*Sample Report)



Our Solution

The expanded FonesVisuas digital health service combines tele-health consultation services on mobile devices. A patient of a participating healthcare provider that is partnered with FonesLife will be able to consult their healthcare provider and get support in achieving the ideal behavioral change, and receive customized content that suits their lifestyle and needs from their smart devices.

Overview of the FonesVisuas service (Coming Soon)



FonesVisuas: Earlier than Early Detection



Early detection of disease is important. However, this can also bring about a significant mental and physical burden, even in its early stages. What FonesVisuas seeks to do is to let people better understand their risks if they do not change their lifestyle habits, and allows for early intervention where necessary. With timely intervention, people can better understand the risks and change their lifestyle habits for the better.

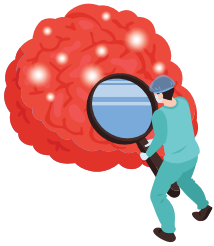
Addressing Age-related conditions

Dementia



Dementia casts a shadow over aging populations. Our innovative analysis excels in identifying subtle changes in blood protein profiles, offering healthcare providers the ability to diagnose and intervene at its earliest stages, allowing patients to experience a higher quality of life and reducing the burden on caregivers and healthcare systems.

Stroke



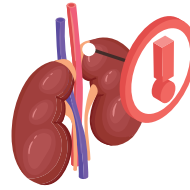
Stroke remains a leading cause of disability and mortality among the elderly. Our rapid detection of blood protein anomalies will allow healthcare professionals the necessary data to assess stroke risk and implement preventive strategies, thereby reducing the incidence and severity of strokes.

Myocardial Infarction (Heart Attack)



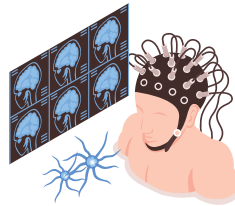
Myocardial Infarction is a significant concern, especially among the elderly. Our advanced analysis technology not only detects markers associated with age-related conditions like dementia, CKD, stroke, and cerebral infarction, but also plays a pivotal role in identifying early signs of myocardial infarction. This comprehensive approach empowers healthcare providers to initiate preventive measures and interventions, promoting cardiovascular health and enhancing overall patient care.

Chronic Kidney Disease (CKD)



Chronic Kidney Disease often advances silently. Our innovative analysis identifies markers linked to CKD, empowering healthcare providers to initiate preventive measures, ultimately leading to improved patient outcomes and reduced healthcare costs.

Cerebral Infarction



Cerebral infarction, a form of stroke, can have devastating consequences. Our advanced blood protein analysis aids in identifying at-risk patients, allowing for early interventions to prevent brain injury and related complications, thus enhancing overall patient care.

Empowering Early Detection for Lifelong Wellness

NEC and FonesLife offer a groundbreaking solution that addresses aging concerns through advanced blood protein analysis. Our digital health service, FonesVisuas, not only allows precise early detection of age-related conditions such as dementia, CKD, and various forms of stroke but also prioritizes patient education for proactive lifestyle changes. Paired with telehealth consultations, FonesVisuas aims to revolutionize early intervention, emphasizing a preemptive approach for improved quality of life and reduced healthcare burdens.

Dive deeper into early detection with NEC.

Contact us at nec_asia@nec.com.sg

SINGAPORE

NEC Asia Pte Ltd
(Regional Headquarters)
sg.nec.com



SCAN ME

Scan the QR code to head to our APAC site for more information on our solutions and products. Follow us on these platforms for updates.



Indonesia

PT. NEC Indonesia
id.nec.com

Malaysia

NEC Corporation of Malaysia Sdn. Bhd.
my.nec.com

Philippines

NEC Philippines, Inc.
ph.nec.com

Thailand

NEC Corporation (Thailand) Ltd.
th.nec.com

Vietnam

NEC Vietnam Co, Ltd.
vn.nec.com